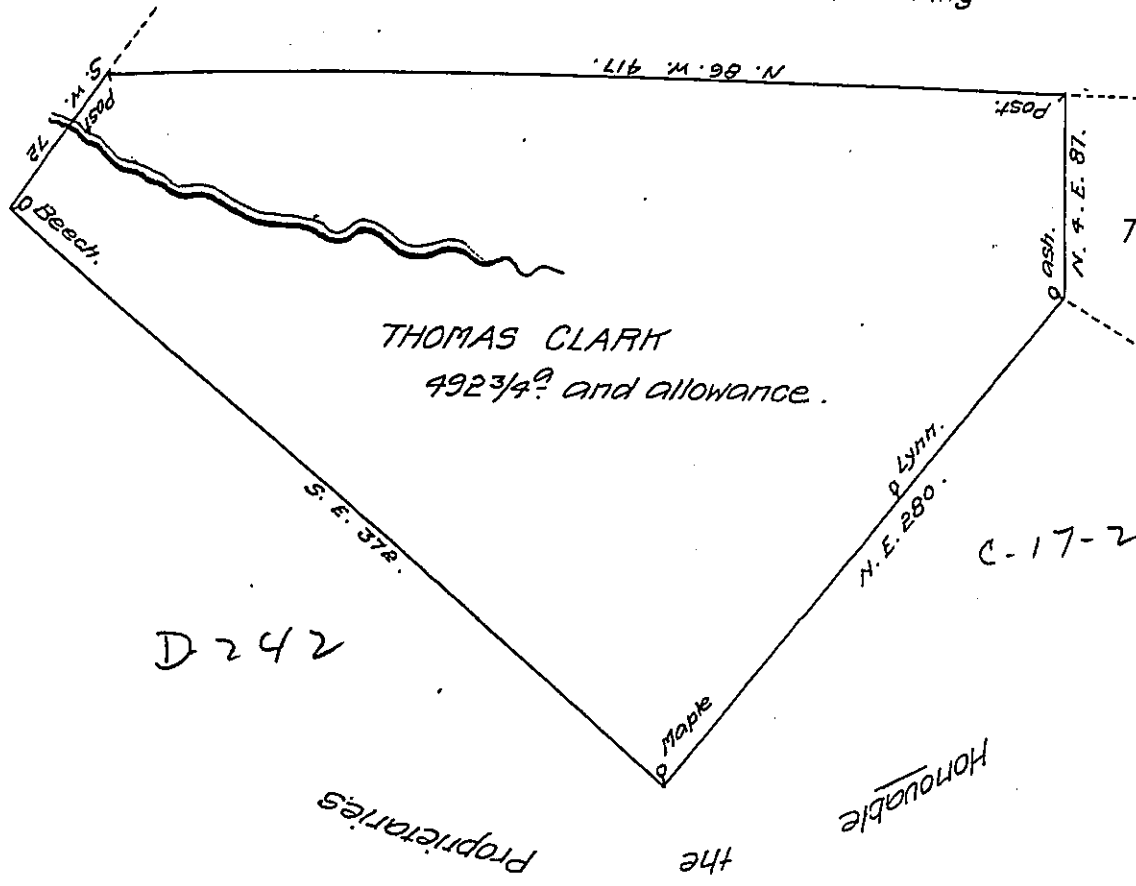


A-8-176

Supposed to be the State of New York.



A Draught of a Tract of Land Situate on a branch of Wappasining Creek in Luzerne (formerly Northumberland) County Adjoining the Northern Boundary of the State of Pennsylvania, Containing four Hundred and Ninety Two and $\frac{3}{4}$ Acres and allowance of 6 P. Cent for Roads &c. Survey'd for ~~William~~ Thomas Clarke the 23^d day of October 1786. in Pursuance of his Warrant bearing date the 2^d day of July 1784.

by W^m Gray. D. S.

To John Lukens Esq^r.

Surv^r. Gen^l.

IN TESTIMONY that the above is a copy of the original remaining on file in the Department of Internal Affairs of Pennsylvania, made conformably to an Act of Assembly approved the 16th day of February, 1833, I have hereunto set my Hand and caused the Seal of said Department to be affixed at Harrisburg, this twenty fourth day of February 1908.

Henry Houck
Secretary of Internal Affairs.